

What Woodstock is moving up to . . .

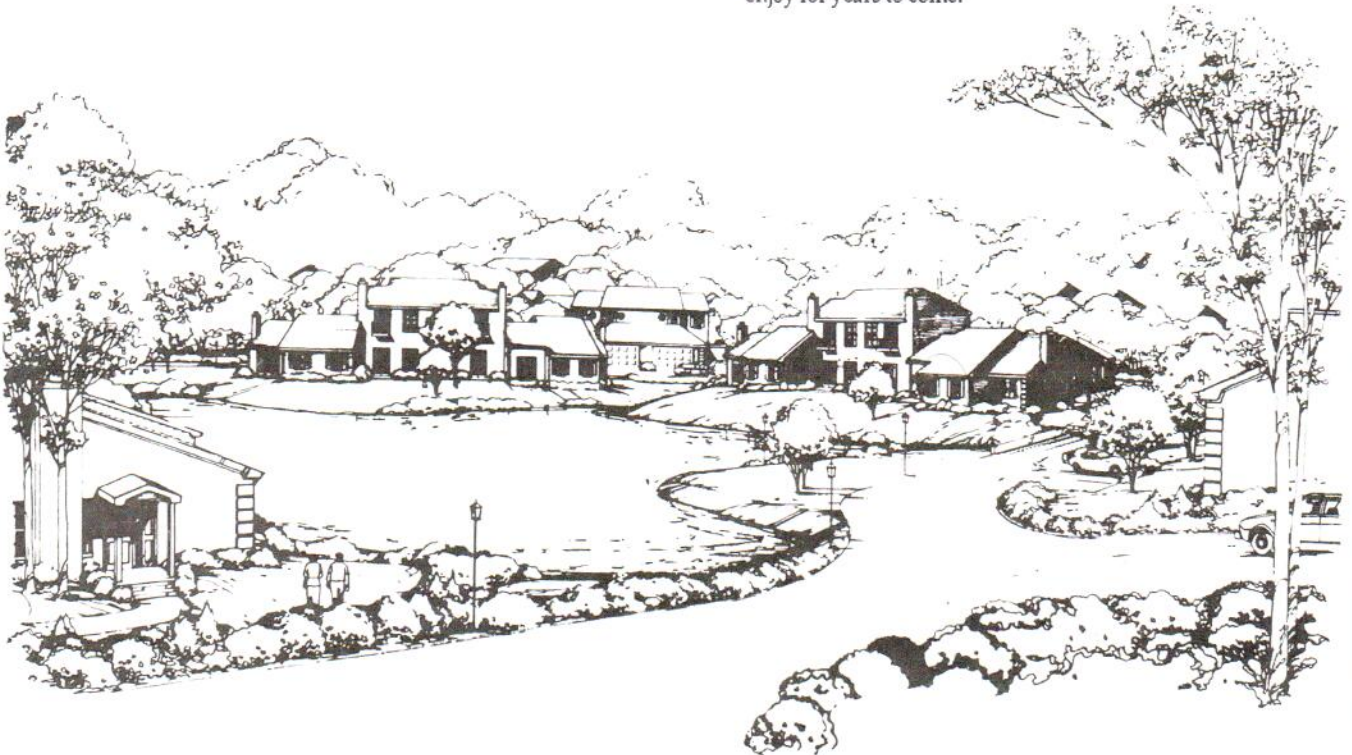
LAKEVIEW ESTATES

Welcome to Lakeview Estates where comfort, style and elegance are a way of life for you and your family to enjoy.

In the heart of Lakeview Estates offers a lifestyle that makes living fun. The lush greenery and a well-designed home makes Lakeview Estates truly special.

Each floor plan is more than spacious, highlighted by major living and entertainment areas. Standard features at Lakeview Estates are usually optional features anywhere else. Central heat and air, garage door openers and whirl pool tub in mastersuite.

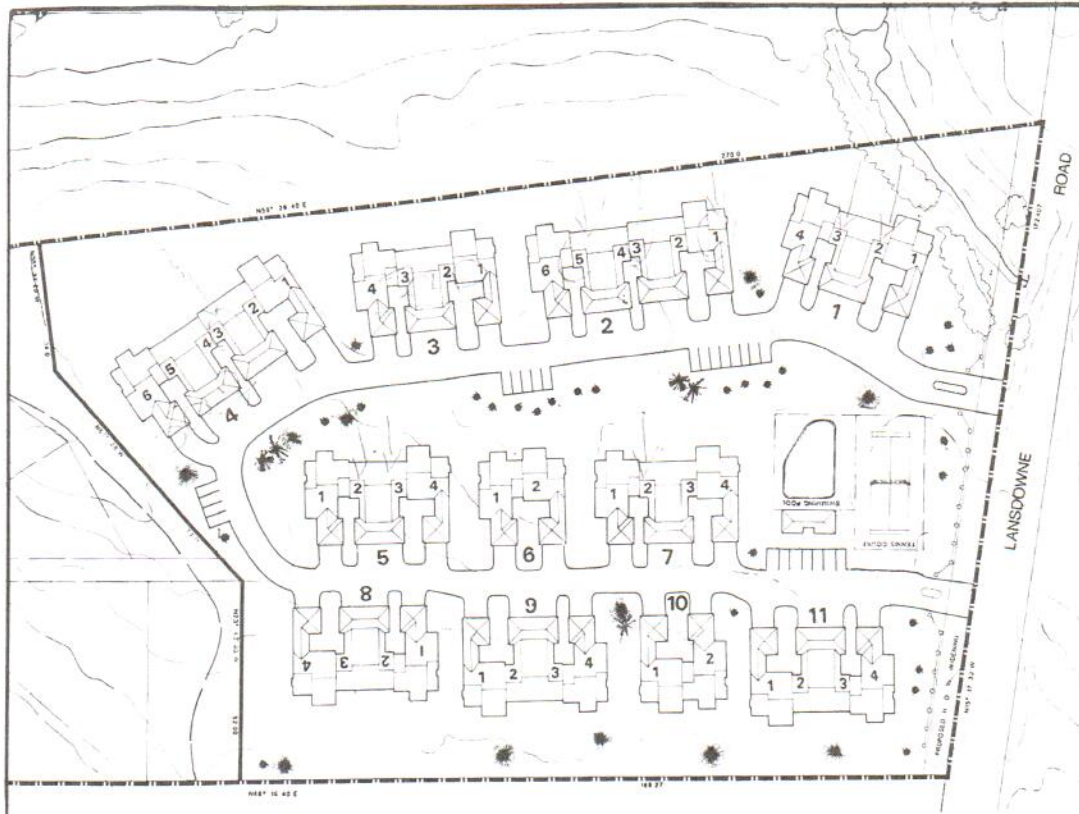
And to insure your living comfort, we've given special attention to your master suite. Brass fixtures, [REDACTED] and quality carpets are all a part of your new home. A home we're proud to present. A home you'll enjoy for years to come.



Artist Illustration
Not exactly as shown

EASTLENE ESTATE LTD.

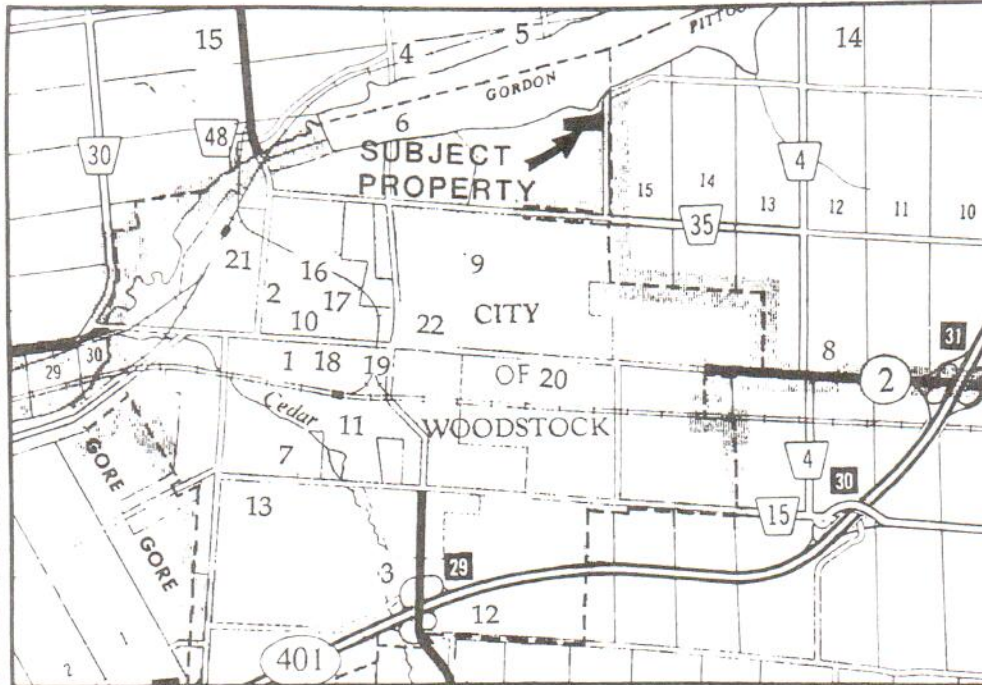
SITE PLAN



*Final plans approved by builder/developer take precedence over artwork and may differ from artwork.
Specifications may change without notice.*

TRANSJERINE DEVELOPERS LTD.

AREA MAP



SCALE 1:2100

- | | |
|-------------------------------------|----------------------------------|
| 1 Old City Hall Museum | 12 Pattulo Ridge Industrial Park |
| 2 County Court House | 13 Proposed Community Centre |
| 3 Quality Inn (Altadore) | 14 Innerkip Golf Course |
| 4 Oxford Sailing Club | 15 Oxford Golf and Country Club |
| 5 Camping (Gordon Pittock Lake) | 16 Hospital (General) |
| 6 Woodstock Rowing Club | 17 Knox Prebyterian Church |
| 7 Southside Park | 18 New St. Paul's Church |
| 8 Blandford Mall Shopping Centre | 19 College Avenue United Church |
| 9 Huron Park High School | 20 St. Rita's Church |
| 10 Woodstock Collegiate High School | 21 St. Mary's Church |
| 11 Cass High School | 22 Old St. Paul's Church |

EASTIDENE ESTATE LTD.



STANDARD FEATURES

Interior Quality

- * Decorative Moulding Package
(4" crown in downstairs except utility and kitchen)
2" piece crown in living room, dining room and master suite
- * Wood Cabinets
- * Painted or stained woodwork
- * Six Panel Painted Doors
- * Floor Covering per plan
- * Washer and Dryer Hook-up
- * Lighting Fixture Allowance
- * Pre-engineered Fireplace
- * Central Heat and Air
- * Automatic Ice Maker Hook-up

Design Excellence

- * Master Bath Double Sink
- * Ventilated Shelving Units
- * Walk-in Closet Per Plan
- * Smooth, Tray or Volume Ceilings Per Plan
- * French Doors
- * Whirlpool Bath Tubs in Master
- * Quion Corners Per Elevation
- * Separate Shower in Master Bath
- * Dead Bolt Locks
- * Cable T.V. Prewire in Kitchen, Living Room & Master Suite
- * Three Ceiling Fan Location Braces
- * Prewired Telephone Outlets Per Plan
- * Bronze/Brass Finish Bath Fixtures
- * Skylights
- * Garage Door Openers

Exterior Quality

Wood Deck and Patios
Two Car Garages
Interlocking Stone Driveways
Underground Utilities
Aluminum Siding (Upper)

Mail Boxes
Brick to Grade
Professional Landscaping
Aluminum Glad Windows
Aluminum Gutters and Down Spouts

Option Features

Security System
Intercommunication System
Central Vacuum System
Trash Compactors
Hardwood Flooring

Microwave with Built-in Hood
Automatic Dishwasher
Self Cleaning Oven
Disposal
Ceiling Fans (three locations)

LAKEVIEW ESTATES
PRICE LIST

NAME	TYPE	PRODUCT DESCRIPTION	PRICE
Arrington	Cottage with loft	2 Bedroom. Loft area. 2 Baths, Kitchen, Breakfast nook. Garden Window. Living and Dining Room with Cathedral Ceiling, Fireplace, Walk in Closet. Private Deck with Gas Grill Hookup and 2 Car Garages	
Arrington with walkout basements		Blocks 1 2 3 and 4	\$191,000.00
		Blocks 5 6 and 7	\$181,000.00
		Blocks 8 9 10 and 11	\$176,000.00
Berkshire	2 Storey	3 Bedrooms. 2 1/2 Baths. Kitchen with Breakfast area and Skylights Living and Dining Room. Fireplaces. Walk in Closet. Private Deck with Gas Grill Hookup and 2 Car Garages	
		Blocks 1 2 3 and 4	\$171,000.00
Berkshire with walkout basements		Blocks 5 6 and 7	\$175,000.00
		Blocks 8 9 10 and 11	\$166,000.00
			\$161,000.00
Coleridge	Cottage	3 Bedrooms. 2 Baths. Kitchen with Breakfast area. Living and Dining Room. Fireplace. Walk in Closet. Private Deck, Courtyard off Breakfast area with Gas Grill Hookup and 2 Car Garages	
Coleridge with walk out basements		Blocks 1 2 3 and 4	\$192,000.00
		Blocks 5 6 and 7	\$182,000.00
		Blocks 8 9 10 and 11	\$177,000.00

